



TEMPORARY LIVING

MODULAR PROJECT FOR CONSTRUCTION OF A
TEMPORARY BUILDING WITHOUT EXTENDED
FOUNDATION ON USING FOR AN RESIDENTIAL UNIT



INITIAL SITUATION

Due to a variety of reasons, an accumulation of people can occur quickly and unpredictably. In many cases there is a need to create an acceptable temporary or even long-term accommodation. Due to social and religious differences, the nature of such accommodation is an essential success factor for social and tension-free coexistence.

The solution is to create accommodations for these events that meet basic human needs in a quick, timely and uncomplicated manner. Temporary Living offers an overall concept that is promptly available, meets all requirements and can be realized on a variety of substrates.



THE GOAL

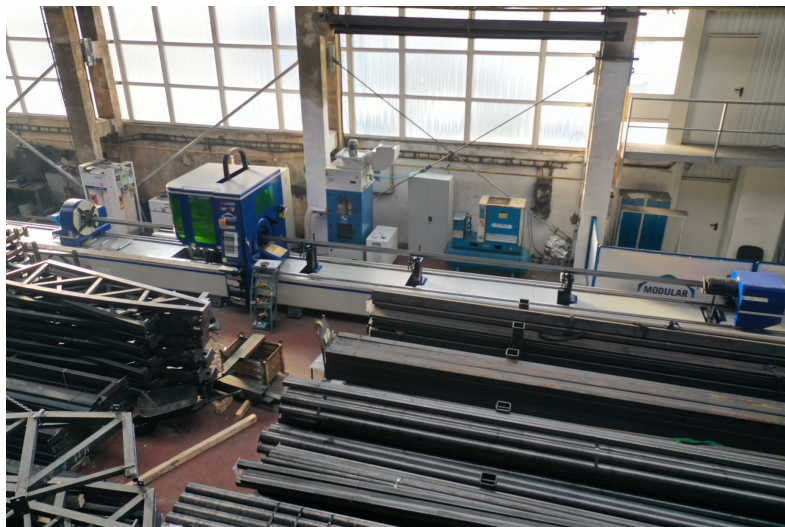
The aim is to create an autonomous structure that meets the respective humanitarian requirements without major demands on foundation, equipment and construction time.

The uncomplicated assembly and disassembly as well as the entire transport concept allows the use at a variety of locations and substrates. Due to the correspondingly high quality materials used, the consistent quality for repeated use is given.

A modular construction system for short- or long-term applications, which can follow the different requirements of the location and execution. Additional equipment options such as a PV, water treatment system, additional insulation designs, etc. are already provided for in the basic concept.

In summary, the aim is to provide a universal product for a wide range of requirements and areas of application with short implementation paths.





THE COMPANY

MODULAR Hallensysteme GmbH is a full-service provider with its own planning, production in Slovakia and in-house assembly teams, creating economical and individual construction projects for and with our customers.

Our own production in Slovakia combines many years of experience with quality. MODULAR hall systems are certified according to EN 1090-1&2 in EXC 2 and EN ISO 3834-2. Our own fitters with many years of experience in the field of steel and membrane construction enable free forms, impressive constructions and spans.



Planung



Projektentwicklung



Produktion



Montage



PARTNERS OF MODULAR

The Modular company has been working with Bieri Tenta AG for almost 25 years. A premium product from HEYtex from Germany with a material type of 950 g/m² is used for the membrane covering. This technical fabric is produced exclusively for Modular and is registered as a construction product.

MODULAR halls on RMS LÜRA partition walls combine economy, flexibility and storage technology. The high construction enables spans from 12 to over 40 m and corresponding eave heights on the long sides.

The auditable systems are for everyone
Suitable for bulk goods.





SIEMENS



voestalpine

STRABAG

BayWa

SÜDSALZ

K+S

BOREALIS



MAX BÖGL

ROHRDORFER



heinzelpaper
RAUBLING PAPIER GMBH

Red Bull

doka



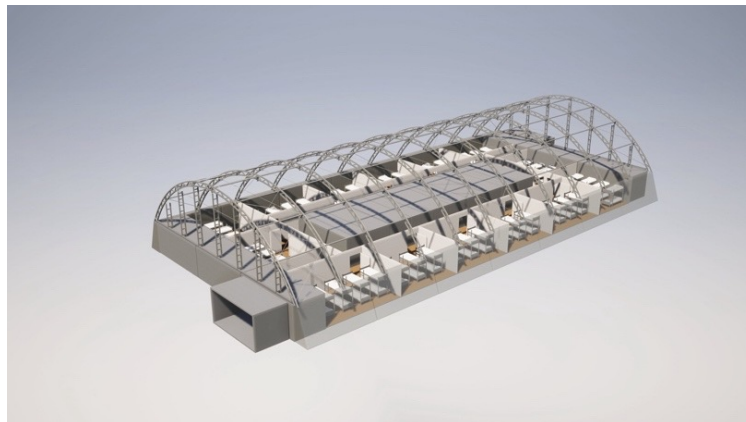
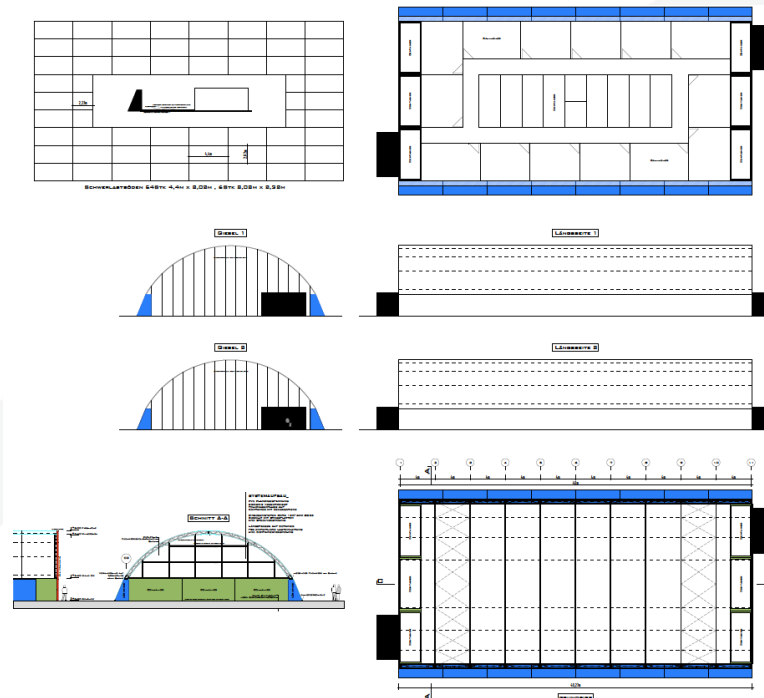
umdasch
THE STORE MAKERS



INTERNATIONAL PRESENTATION

Depending on the design and type, our product is available as a kit – self-assembly or supervisor assembly is possible. Modular halls can now be found all over the world. We are proud of our international partner network, which we can look back on successfully and over the long term.

It is more than a good calling card for our company with global players as long-term customers to face new project challenges year after year.



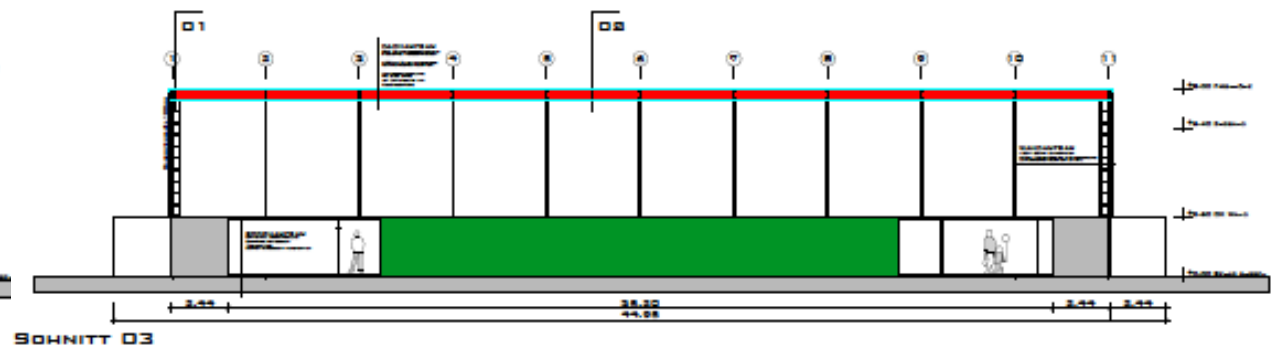
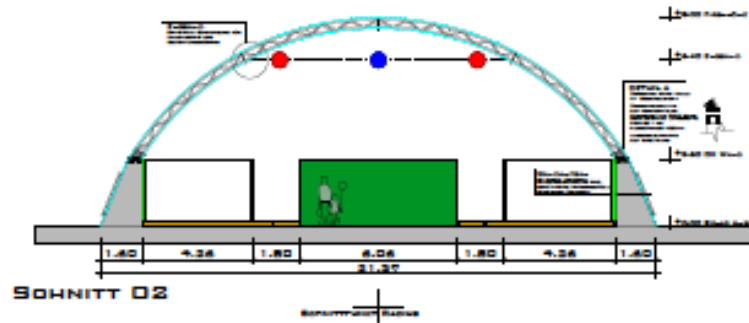
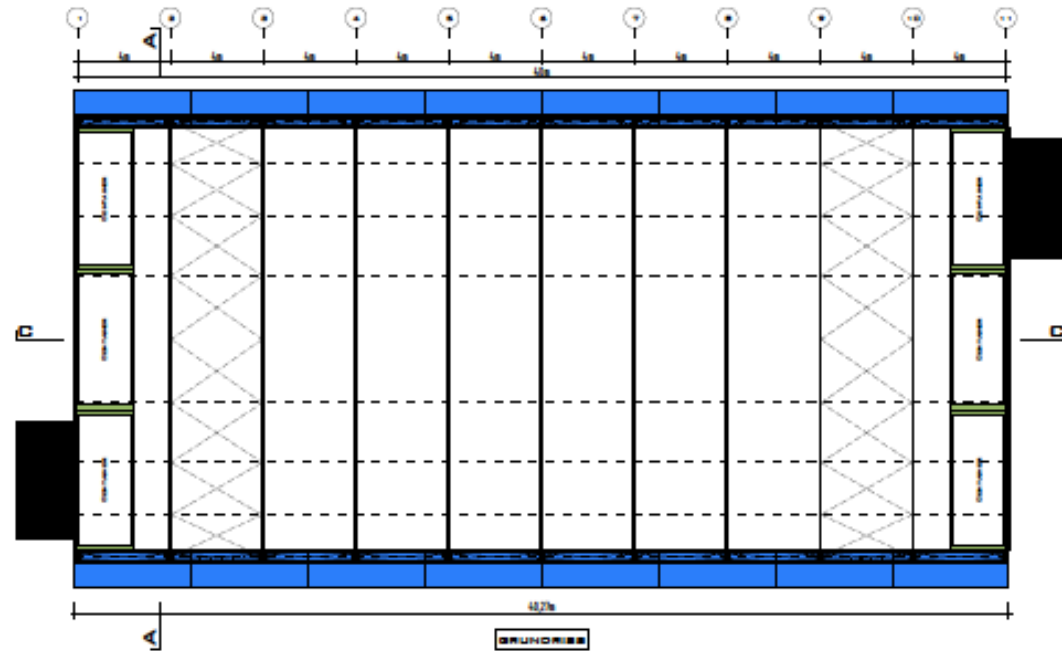
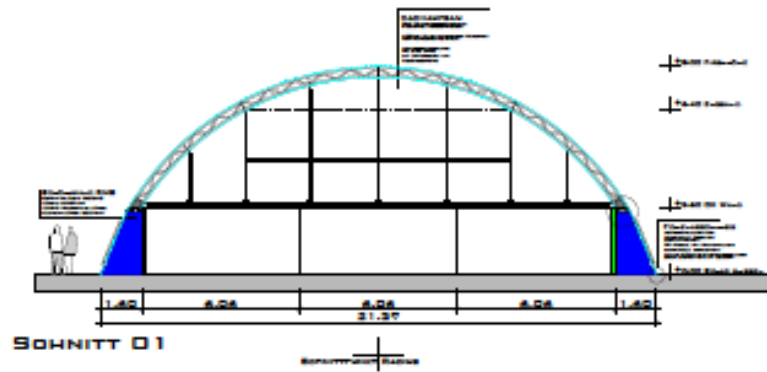
OUR CONCEPT

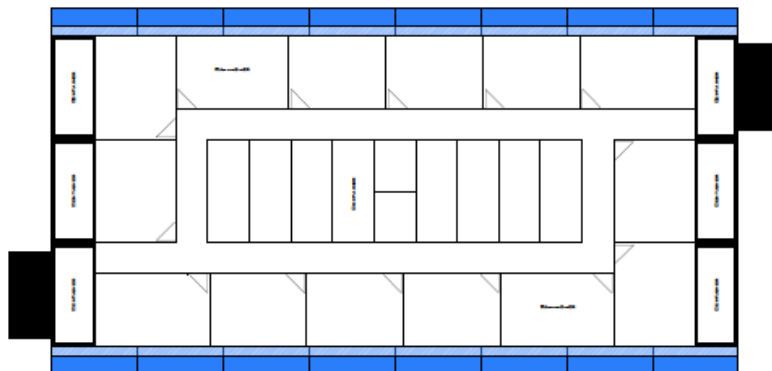
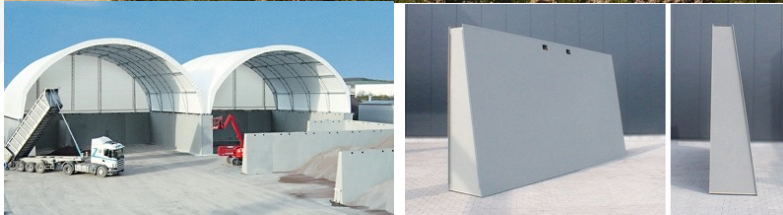
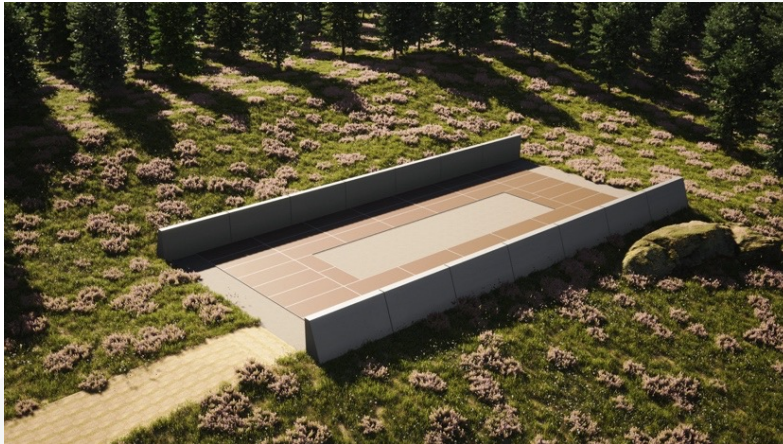
Our concept not only meets all the requirements of the building - it also solves current problems and points of conflict

The initial product is a steel truss frame in the shape of an arch, which is based on a prefabricated wall structure made of flat steel sheets.

On a floor area of just under 860m², the outer shell is converted into a living area on the inside with ready-made container systems and a coordinated spatial concept, so-called temporary living.

LAGE | ZIEL | MASSNAHME





THE FOUNDATION

Due to the construction of water- or sand-filled steel walls, a foundation is possible on a wide variety of substrates such as earth, gravel, asphalt, sand and even ice.

No extended measures such as concrete works or anchoring as well as the consideration of underground installations are necessary.

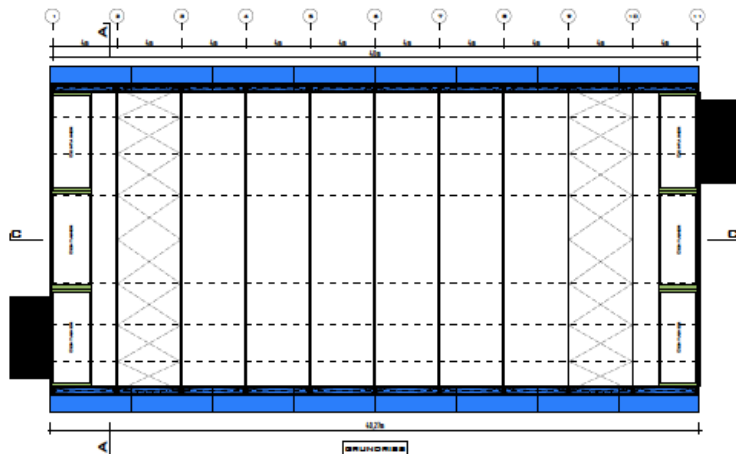
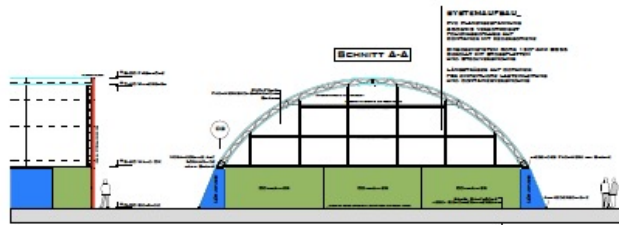
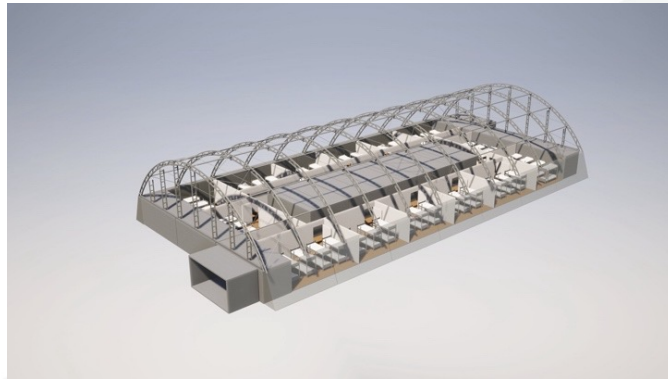
The wall structure performs several functions such as burglary protection and load bearing of the supporting structure. The filling with the available filling material such as sand or water represent a quick static function. This point, especially in disassembly and reuse, is an innovation in the overall project and unique in the market worldwide.



PACKING & DELIVERY

For all-around burglary protection as well as interim storage after delivery, the 20 ft. Delivery containers are also statically integrated into the hall concept and the design of the end walls. In addition to their delivery function, the containers are an essential part of the building's utilization.

After unloading, they will be converted into various functions such as entrance locks, storage rooms and building services. In case of dismantling, the project is reconstructed with short lead times back to the original form of delivery.



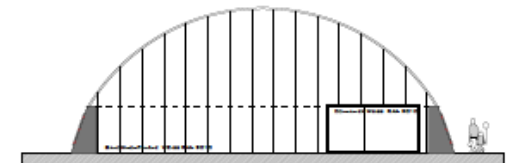
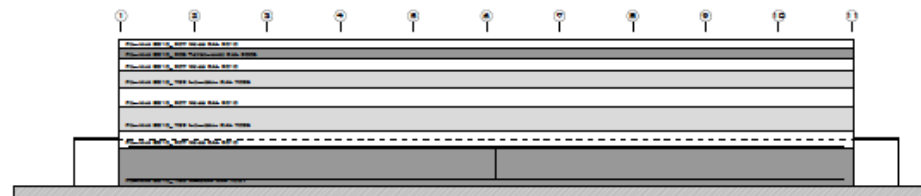
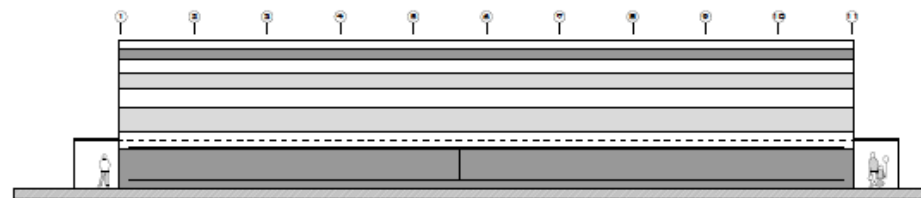
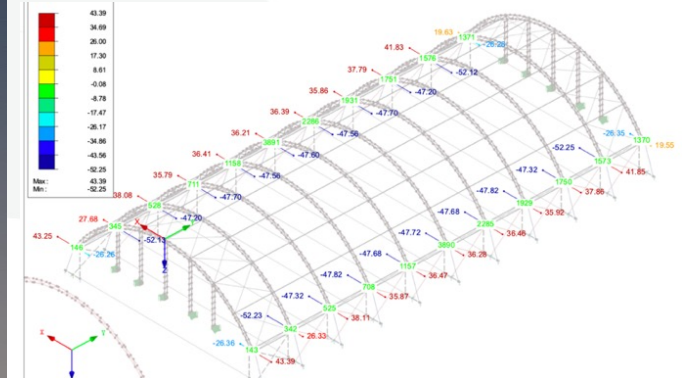
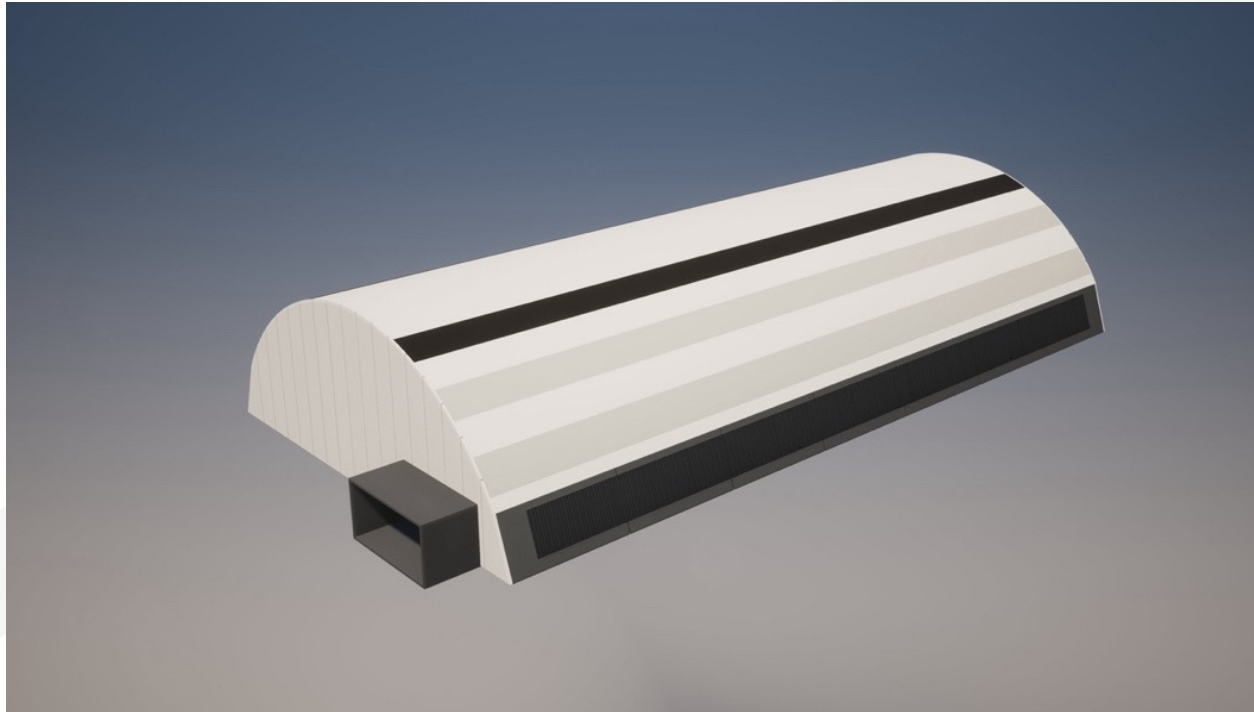
THE STRUCTURE & ENVELOPE

The arch form is created by a truss frame made of steel in combination with membrane covering. The outer shell consists of a continuous plane, which functions as an outer skin in one piece.

For thermal requirements, another membrane layer is attached to the inner side of the truss bottom chord in addition to the outer shell. The resulting interstitial space allows the regulation of heating or cooling processes on the object.

The end walls, and thus the longitudinal terminations of the project, will be made with a frame structure and foundation on the delivery containers. Sandwich panels in a vertical laying pattern are applied as the external thermal termination.

LAGE | ZIEL | MASSNAHME



ANSICHTEN



THE FLOORSTRUCTURE

Statically stable elements are used for the entire floor structure. These are installed in large formats and adapted to the respective subfloor and the situation on site. Laminate flooring or carpets can be selected as the surface covering.

ASSEMBLY & DISASSEMBLY

Due to the overall concept, the respective assembly steps are coordinated and predetermined. The assembly time of the object without the various expansion stages is 10-12 days.

LAGE | ZIEL | MASSNAHME



1. levelup the area



2. installing the metall walls



3. wallinflatung with water or gravel



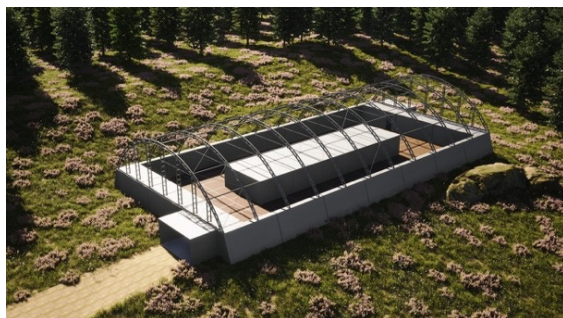
4. Installing the floorelements



5. Installing the 20ft containers



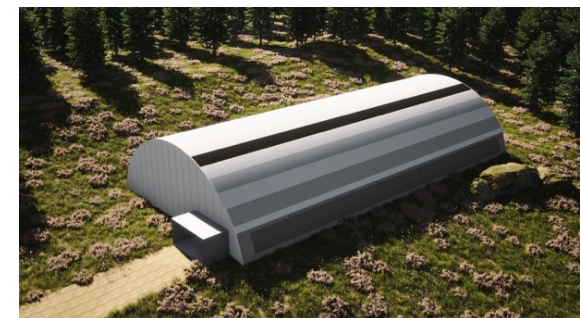
6. furniture and surfaces



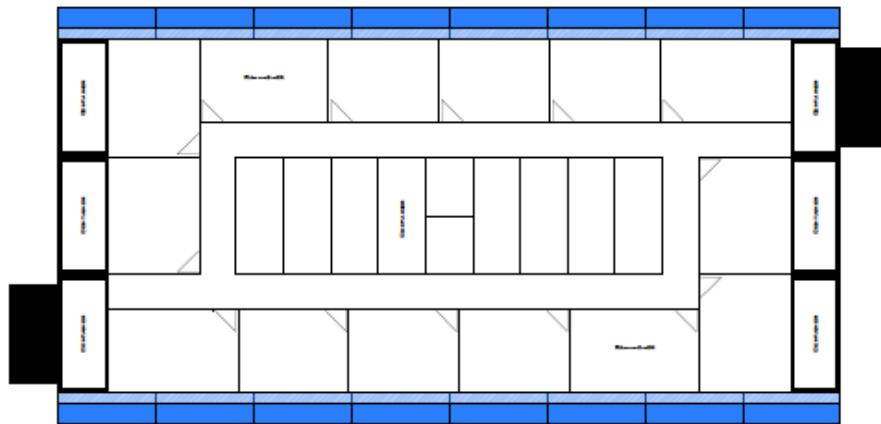
7. Steelframes on roof and walls



8. installing house technic



9. outsidelayer and metall sheeds

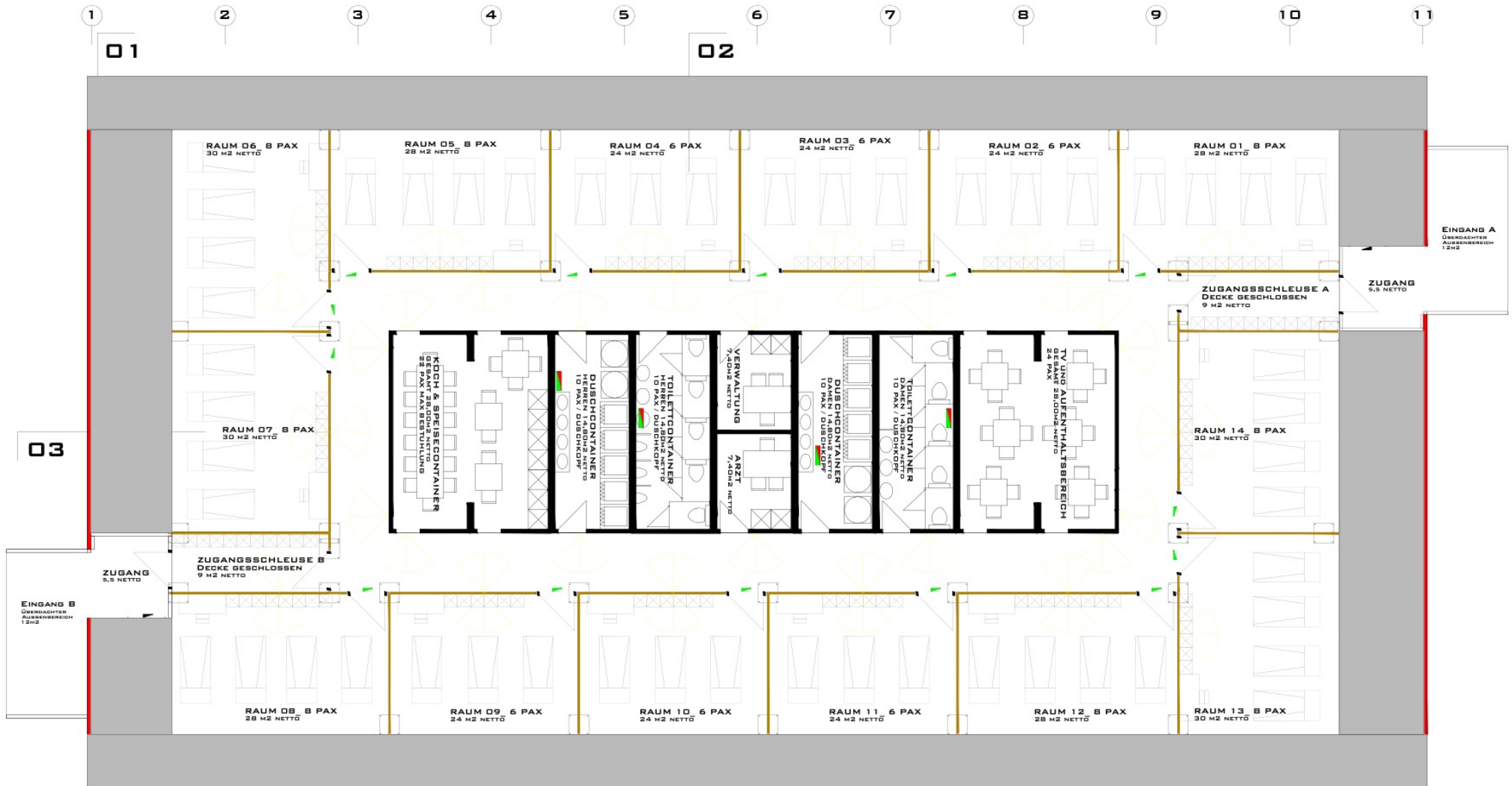


THE ROOMCONCEPT

All requirements for wet cells, infrastructure or common areas are carried out by positioning the containers in the center of the object. The connection lines for supply and disposal are to be made underground in advance. The containers in the object core show the starting point for all continuous dimensions of the object. Access is through the two end walls and container locks directly into a circumferential corridor system. Circulating a floor plan concept of 2 room types with 24m² and 28m² and an occupancy of 6 and 8 was developed.

A subdivision of the living areas for different requirements can thus be easily realized. These room units offer, in addition to the bunk beds for each person occupancy, a closet area as well as a workstation, which can be shared. The areas are lockable and divided by means of a partition wall system.

LAGE | ZIEL | MASSNAHME

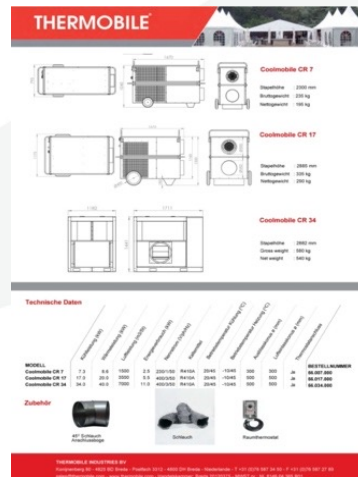




Thermobile Coolmobile CR
Die ultimative mobile Klimaanlage

- Der Thermobile Coolmobile CR ist ein robustes und kompaktes Kühl- und Heizsystem für die schnelle Kühlung und Heizung.
- Praktisch, flexibel und leicht zu bedienen. Schließen Sie das Gerät einfach an, verbinden Sie den Schlauch und Sie können an jedem gewünschten Ort kühlen oder heizen.
- Die Coolmobile CR - Serie ist speziell für den mobilen Einsatz im Außenbereich entwickelt worden. Keine Luft tritt in die Raumkavität, mit der Möglichkeit zur Rekuperation.

Für Ihren Bedarf an Heizung und Kühlung, wir haben die Lösung!



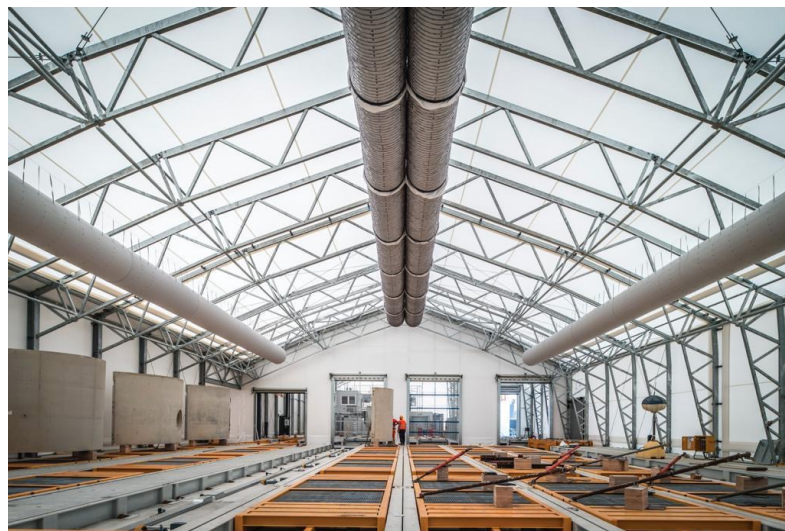
Technische Daten

Modell	Wärmeleistung (kW)	Wärmeleistung (BTU/h)	Wärmeleistung (kcal/h)	Wärmeleistung (HP)	Wärmeleistung (TR)	Wärmeleistung (kW)	Wärmeleistung (BTU/h)	Wärmeleistung (kcal/h)	Wärmeleistung (HP)	Wärmeleistung (TR)	Wärmeleistung (kW)	Wärmeleistung (BTU/h)	Wärmeleistung (kcal/h)	Wärmeleistung (HP)	Wärmeleistung (TR)	Wärmeleistung (kW)	Wärmeleistung (BTU/h)	Wärmeleistung (kcal/h)	Wärmeleistung (HP)	Wärmeleistung (TR)
Coolmobile CR 7	7.0	24000	10000	3.5	1.25	7.0	24000	10000	3.5	1.25	7.0	24000	10000	3.5	1.25	7.0	24000	10000	3.5	1.25
Coolmobile CR 17	17.0	58000	23000	8.5	3.0	17.0	58000	23000	8.5	3.0	17.0	58000	23000	8.5	3.0	17.0	58000	23000	8.5	3.0
Coolmobile CR 34	34.0	116000	46000	17.0	6.0	34.0	116000	46000	17.0	6.0	34.0	116000	46000	17.0	6.0	34.0	116000	46000	17.0	6.0

Zubehör

- 200' Schlauch
- 200' Schlauch
- Rekuperation

Thermobile Modular AG
Königsplatz 10, 38100 Lüneburg, Telefon: +49 (0) 53 23 23 23 23, Fax: +49 (0) 53 23 23 23 23, E-Mail: info@thermobile.de

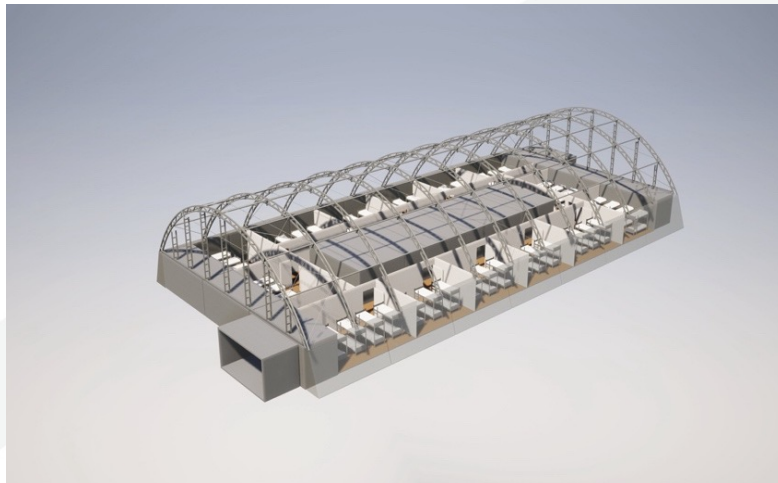


THE BUILDING SERVICES

Due to the situation of the homogeneous external layer, the whole structure is designed in a very dense way. The walls are spanned with the outer skin up to the edge of the terrain and connected to the surface of the surroundings. The multi-layer membrane on the truss structure allows controlled heating and cooling of the required object performance. The positioning of the building services in one of the delivery containers enables a covered positioning of all technical components.

PV modules with a total object output of approx. 22 KW are installed on the wall construction on the long sides. Heat exchangers and storage media are positioned in the building services area.

The basic lighting of the object is available. These can be individually switched for the respective room areas.



THE USE

The area of application of the concept is manifold. Whether it is a team unit, living area, work zone or even a refugee home. Temporary Living offers a use for up to 100 persons in a well thought-out and homelike overall concept.

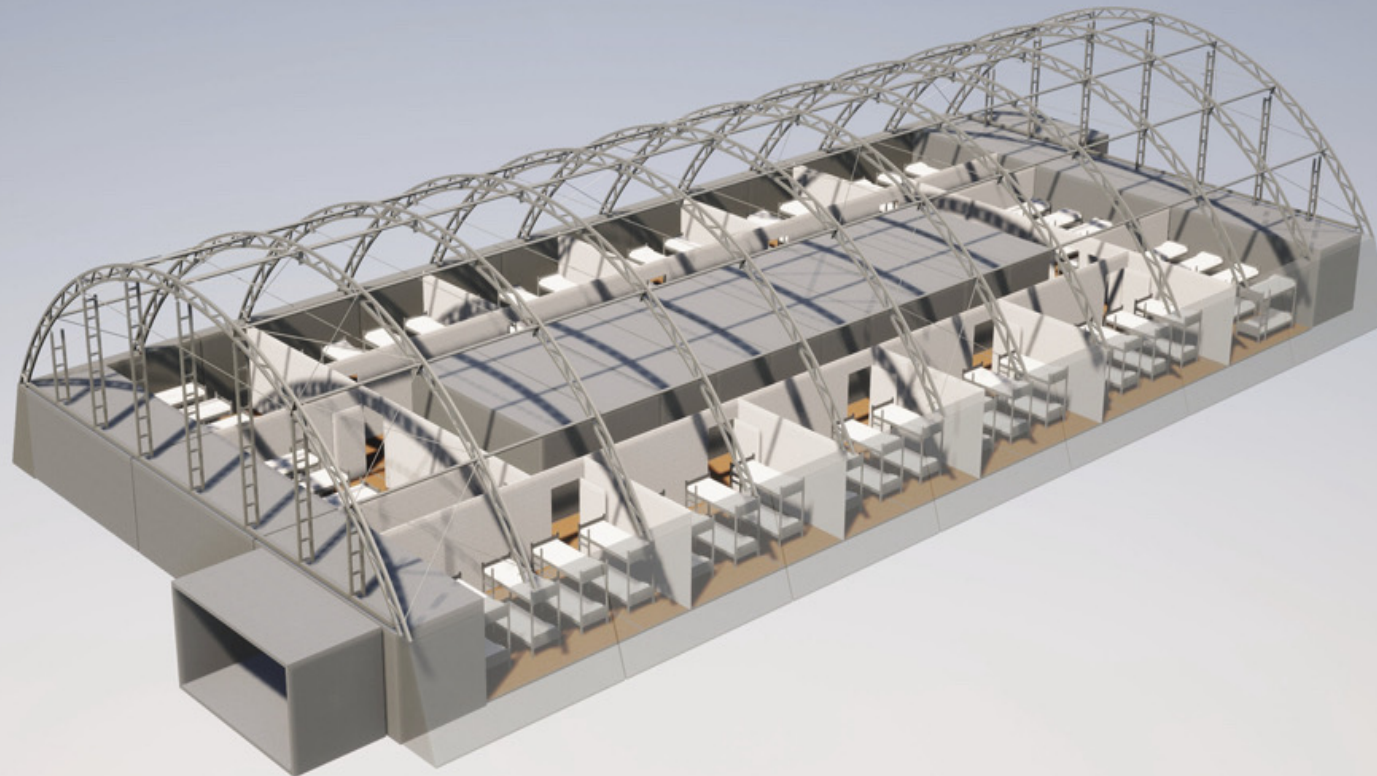
A separation of genders or other criteria can easily be made possible by the use of further modules with possible demarcation.

The module units are available as purchase model, rent or also installment plan.

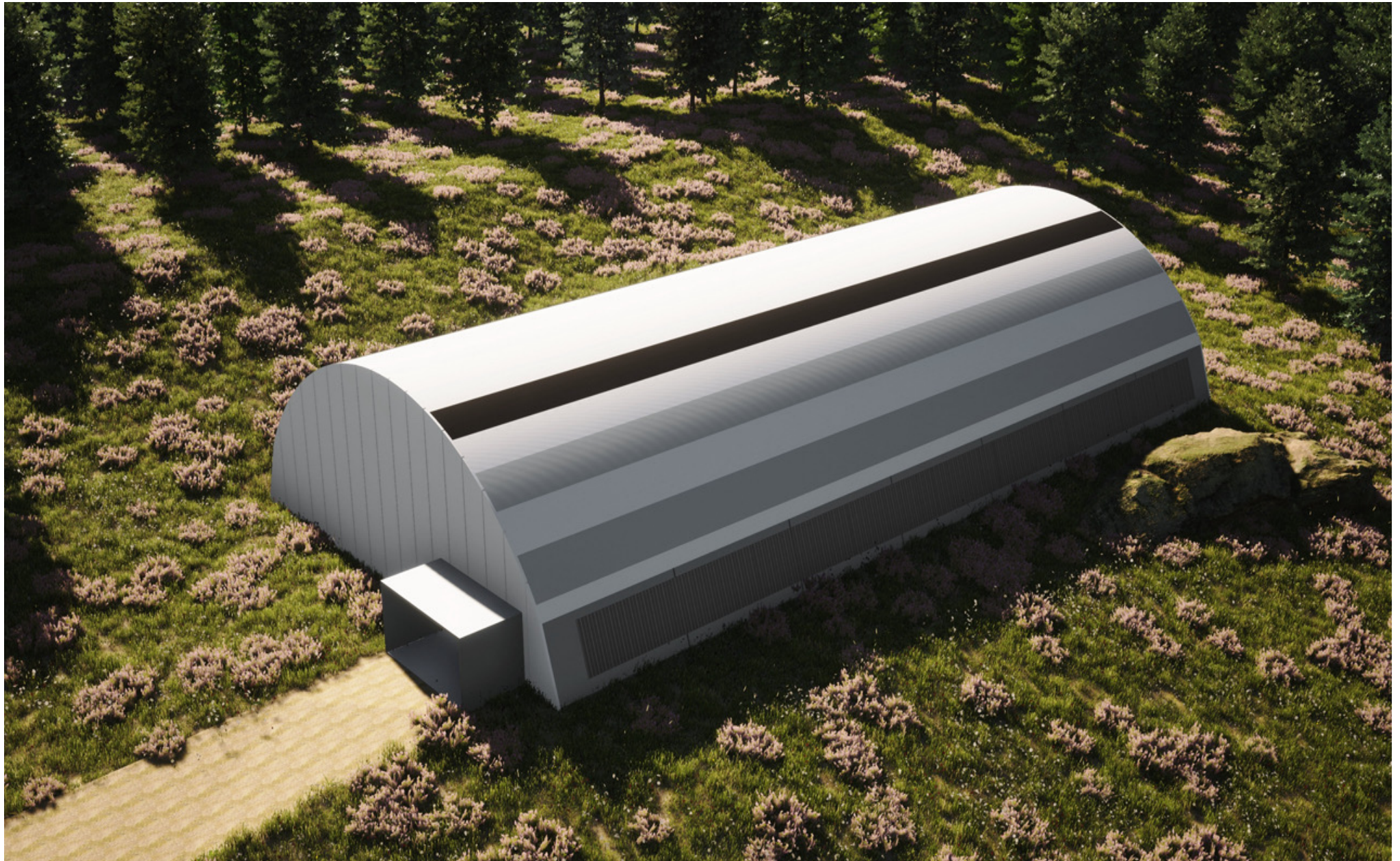
Inquiries under office@modular.at



LAGE | ZIEL | **MASSNAHME**



LAGE | ZIEL | **MASSNAHME**



FACTBOX



Dimensions:	External area 860 m ² – Net internal area 640 m ² .
Foundation:	Bulk wall with water tanks Hall cubage _ m ³ Hall floor as version with heavy-duty floor
Hall volume:	4,960 m ³
Partition walls:	Metal frame construction with trapezoidal sheets
Utilisation:	14 indoor rooms from 24 m ² to 28 m ² for 100 people. Rooms with 6- and 8-person bunk beds 4 wet rooms with separate WC and shower
Ventilation:	Axial fans with central control unit on the end walls
Heating:	Aggregates in the end containers and textile hoses on the drawstring
Electricity:	External supply or PV own production with storage tank
Lead time:	16-20 weeks depending on location and design
Assembly time:	10-12 assembly days (delivery stage 1 hall with floor without interior fittings)
Costs:	Scope of delivery 01 – walls, supporting structure, outer shell, inner membrane, delivery containers, entrance areas, heavy-duty floor, sandwich panels end walls, aeration and ventilation.

PRICING



Basic package:

External area 860 m² – Net internal area 640 m² for 100 people.

Delivery and assembly of the accommodation unit with bulk walls, heavy-duty floors, steel framework, membrane structures, end walls in 120 mm sandwich construction, entrance locks, entrance doors, ventilation system by means of axial fans on the end faces, encl. support for plan presentation at existing sites.

*Not included – lifting devices, water filling of the walls, PV system, lighting, partition walls, interior doors, fire alarm system, locking technology, object heating, additional occupancy of bulk walls on the inside of the hall, water treatment, infrastructure container wet cell and recreation areas, furnishing, hall floor, object labelling, shaft routing of the supply and disposal lines for the container block in the object core

SALESPRICES on request office@modular.at or mail@stefanberger.at

Additional item 01:

Central electrical control box for integration of lighting, PV, heating, ventilation, container areas.

Additional item 02:

Object lighting 14 pcs. wall lights in the sleeping areas – corridor lighting LED all around on the inside of the container – 8 pcs. indirect spotlights on the inside membrane for object lighting.

Additional item 03:

Object heating and cooling by means of external unit and textile hoses in the tension belt area.

Additional item 04:

Additional occupancy of bulkheads on the inside with 80mm sandwich panels for areas of application with low outside temperature.

Additional item 05:

PV system on one long side incl. AC converter and storage medium

Additional item 06:

Object carpet or PVC covering in the interior incl. access lock.

Additional item 07:

Room divider wall elements for partitioning on top floor +2.60 m and interior doors.

Additional item 08:

Bunk beds 50 pcs – lockers 100 pcs – table and chair 14 pcs.

Additional item 09:

Container – 2x wet cell WC shower, 2x toilet, 4x common area, 1x infrastructure.

Additional item 10:

Project management on site in the EU area - travel expenses charged according to actual expenditure.



COPYRIGHT_



MODULAR Roofbuilding GmbH
Berg 10/1 A – 4973 Senftenbach
www.modular.at office@modular.at



Pics copyright Modular – Stefan Berger – Unsplashd

The content of this file is exclusively intended for the designated addressee. If you are not the intended addressee of this file or his/her representative, please note that any form of disclosure, publication, reproduction or dissemination of the contents of this file is not permitted. In this case, please contact the sender of the file. The sender is not liable for errors and omissions. The recipient undertakes not to disclose any confidential information received to third parties and to ensure that third parties cannot gain access to the information while it is being processed. The copyright of this concept folder is exclusively reserved to Modular Hallensysteme GmbH, and its contractual partners. All rights to illustrations, texts, databases and other applications and services of Modular Hallensysteme GmbH, in connection with the website www.modular.at remain to the full extent with Modular Hallensysteme GmbH.